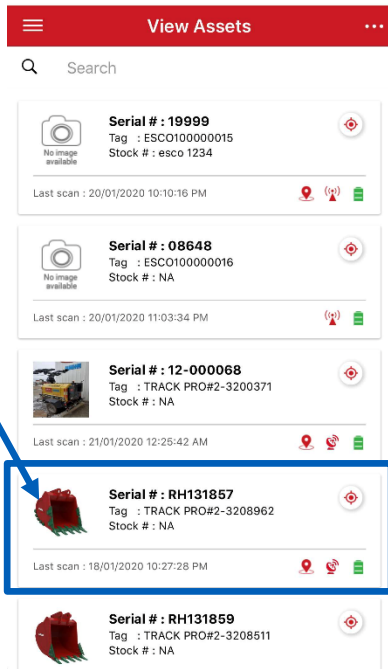


How to delink an asset in the Track Pro app

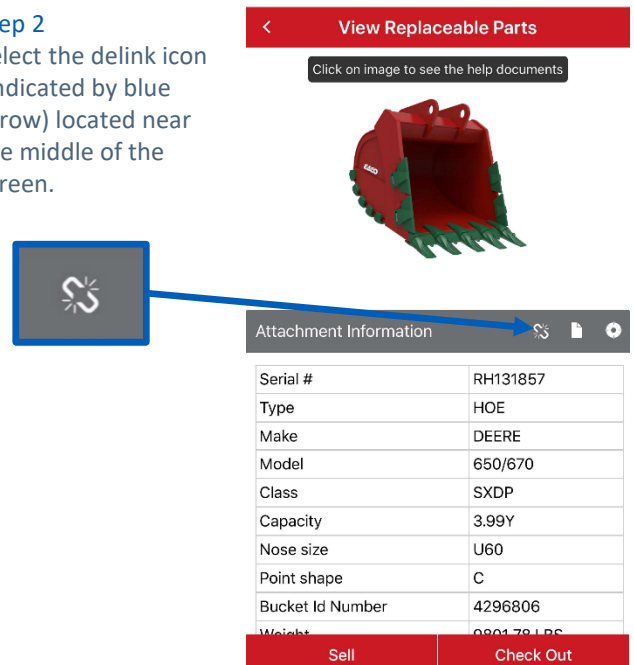
Step 1

Navigate to the list view of the assets page and select the desired asset to delink.



Step 2

Select the delink icon (indicated by blue arrow) located near the middle of the screen.



Step 3

Once the delink icon is selected, a pop-up message confirming the delinking of tag from asset will appear. Verify the tag serial number and asset number belong to the correct asset, then select "Ok."

